

## Nova-436 Outdoor 4x1W TDD eNB Quick Start Guide



May 2018  
Version 1.2

### Introduction

This quick start guide is intended for experienced installers. It provides high-level milestones for installing the BaiCells Nova-436 Outdoor 4x1W TDD eNodeB. For more details, please refer to the *BaiCells Nova-436 Outdoor 4x1W TDD eNB Installation Guide* on the website. If you will be setting up the Nova-436 for dual carrier (split mode) operation, please also refer to the *BaiCells Dual Carrier Configuration Quick Guide*.

### Check and Prepare

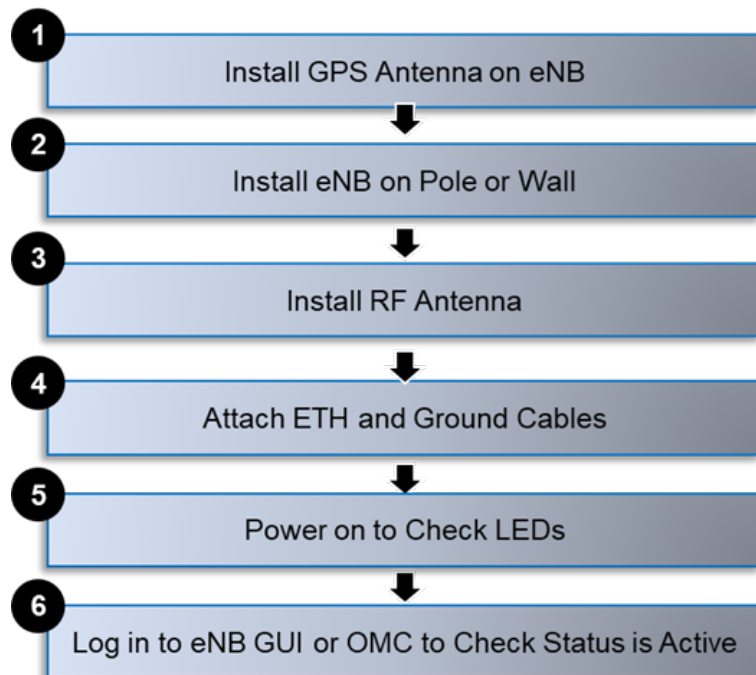
- 1 Nova-436 eNodeB unit
- 1 90V to 305V AC to 48V DC power adaptor
- 1 two-wire green power terminal
- 1 American standard power plug
- 2 SFP optical modules
- 1 GPS antenna assembly kit (including fixing accessories, M4\*14 screw \*2, 1 GPS jumper cable)
- 1 assembled installation bracket kit (assembled: 1 bracket, omega\*4, M10\*160 outer hex bolt \*4, M10 flat gasket\*4, M10 spring gasket\*4, M10 nut\*4; individual: M10 flat gasket\*6, M10 spring gasket\*6, M10 nut\*6, M8\*80 expansion bolt \*2)
- 6 cold shrink tubes
- 2 ground terminals

Item	Description
Power cable	< AWG16, e.g., AWG14
RF antenna cable	50 ohm feeder
RF antenna*	Omni or directional
Optical fiber	Single mode optical fiber
Ethernet cable	Outdoor CAT6 Shorter than 330 feet (100 meters)
Ground cable	16mm <sup>2</sup> diameter yellow-green wire

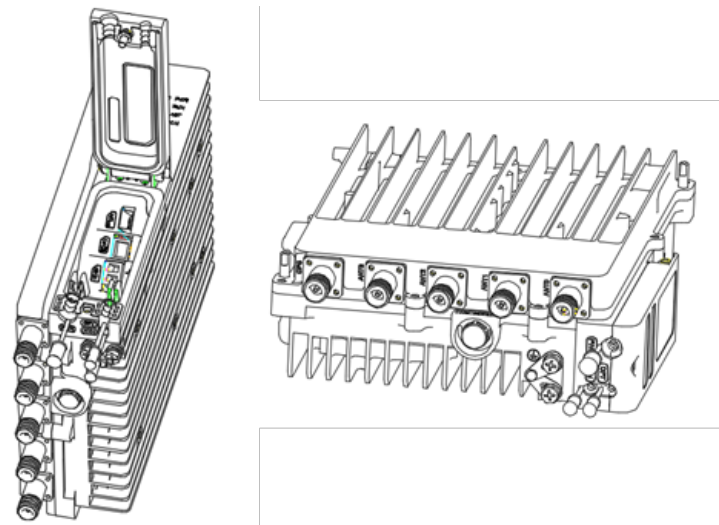
\*When the eNB is operating in dual carrier mode, Cell 1 uses ANT2 and ANT3 and Cell 2 uses ANT0 and ANT1.

Level bar	Marking pen	Knife	Pliers	Wrench
Percussion drill and drill heads	Hammer	Cross screw driver	Cable vice (crimper)	Tape measure
5mm L-shape Allen wrench	Torx screw driver	T7 screwdriver head	Cable Stripper	

### Overview



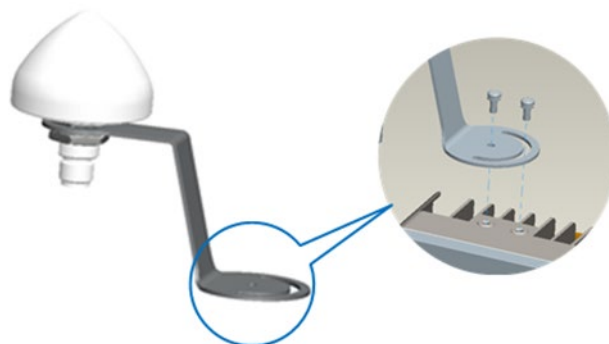
### LEDs & Interfaces



LED	Color	Status	Description
PWR	Green	Steady on	Power is on
		OFF	No power supply
ACT	Green	Steady on	The cell is activated
		OFF	The cell is not activated
RUN	Green	Fast flash: 0.125s on, 0.125s off	The board is loading
		Slow flash: 1s on, 1s off	The board is normal
		OFF	No power input, or board fault
ALM	Red	Steady on	Hardware alarm, e.g., VSWR alarm
		OFF	No alarm

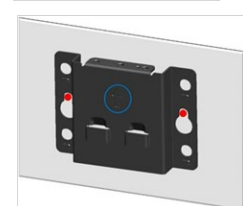
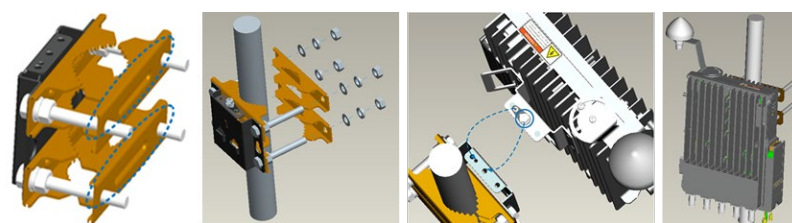
Interface	Description
PWR	Power supply: -48VDC (-60V to -42V)
GPS	Port for optional external Global Positioning System (GPS) antenna, N-female connector
ANT0	Port for external RF antenna 0, N-female connector
ANT1	Port for external RF antenna 1, N-female connector
ANT2	Port for external RF antenna 2, N-female connector
ANT3	Port for external RF antenna 3, N-female connector
OPT	Optical backhaul interface for connecting to external transmission network and used for data backhaul
ETH	RJ-45 interface, used for debugging or data backhaul

### Install GPS Antenna



### Install eNB on Pole or Wall

Pole diameter: 1.6 to 3.9 inches (40 to 100 mm)

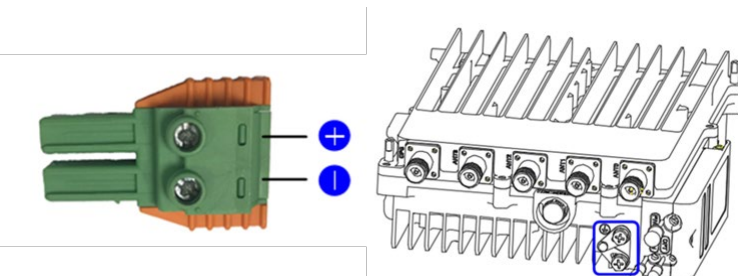


### Connect GPS, RF, WAN, & Ethernet Cables

**Important!** Pre-connection of WAN interface cable: Log in and check that the WAN Connect Type setting is correct for this install (either fiber optic or copper) *before* installing the eNB on the tower.

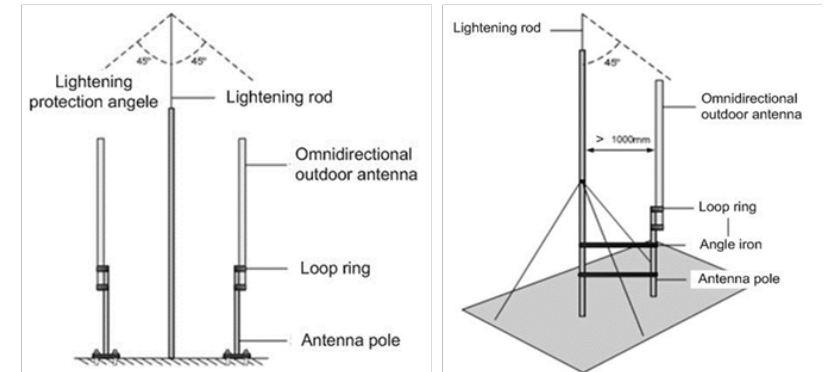
Open eNB wiring cavity; use cold shrink tubes for all connections.

### Connect Power & Grounding

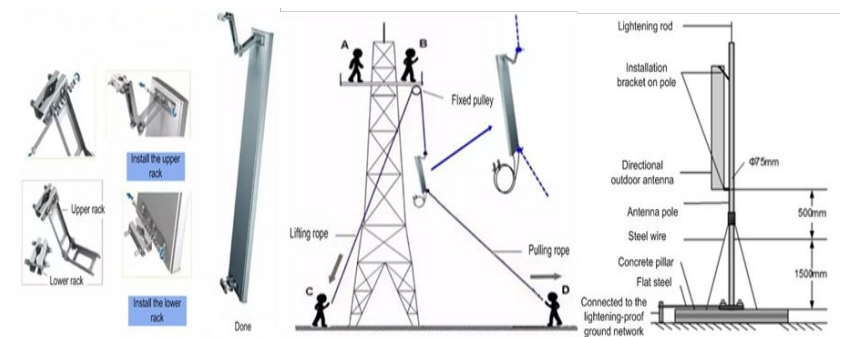


### Install

#### Omni



#### Directional



### Power On & Check LEDs

○ ALM	Alarm
○ ACT	Active
○ RUN	Running
○ PWR	Power

### Check eNB Status in Software

Base Station GUI login - <http://192.168.150.1> (admin/admin), **BTS Info > Status Info > Cell Status = Active**

OMC login - <https://cloudcore.cloudapp.net/cloudcore/> (your email address/your password), **eNB > Monitor > Active Status**

NOTE: Please refer to the *BaiCells Dual Carrier Configuration Quick Guide* for configuration differences when planning to operate the Nova-436 eNB in dual carrier (split sector) mode.

China	North America
Address: 3F, Bldg. A, No. 1 Kai Tuo Rd, Haidian Dist, Beijing, China	Address: 555 Republic Dr., #200, Plano, TX 75074, USA
Phone: +86-10-62607100	Phone: +1-888-502-5585
E-mail: <a href="mailto:contact@Baicells.com">contact@Baicells.com</a>	Email: <a href="mailto:sales_na@Baicells.com">sales_na@Baicells.com</a> or <a href="mailto:support_na@Baicells.com">support_na@Baicells.com</a>
Website: <a href="http://www.Baicells.com">www.Baicells.com</a>	Website: <a href="https://na.Baicells.com">https://na.Baicells.com</a>